



Nilai Inti Wave Insight

24 November 2022

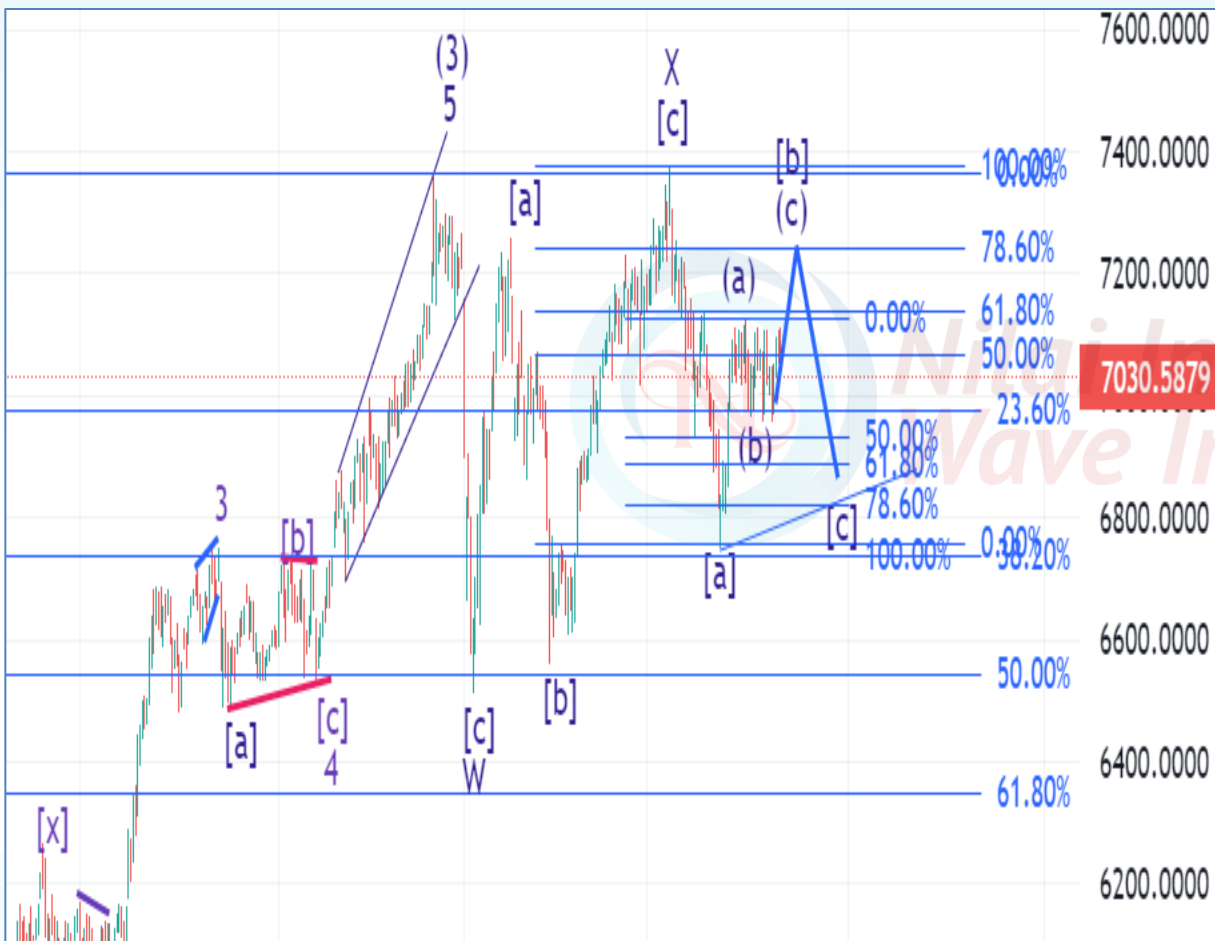
www.nilaiintisekuritas.com

Elliottician Overview

- Jakarta Composite Index *Elliott Wave Perspective*
 - Short Term View (1-2 days): Bullish
- *Stocks Recommendation*
 - **KRYA**; Buy On Weakness - Buy area 410-420; TP 450, 480; SL 390
 - **AGII**; Buy On Weakness - Buy area 2100-2140; TP 2350, 2500; SL 2010
 - **BRPT**; Buy On Weakness - Buy area 790-810; TP 870, 920; SL 780
 - **INCO**; Buy On Weakness - Buy area 7000-7200; TP 7600, 8000; SL 6875
 - **ERAA**; Buy On Weakness – Buy area 386-396; TP 420, 450; SL 378

Jakarta Composite Index

Elliott Wave Perspective

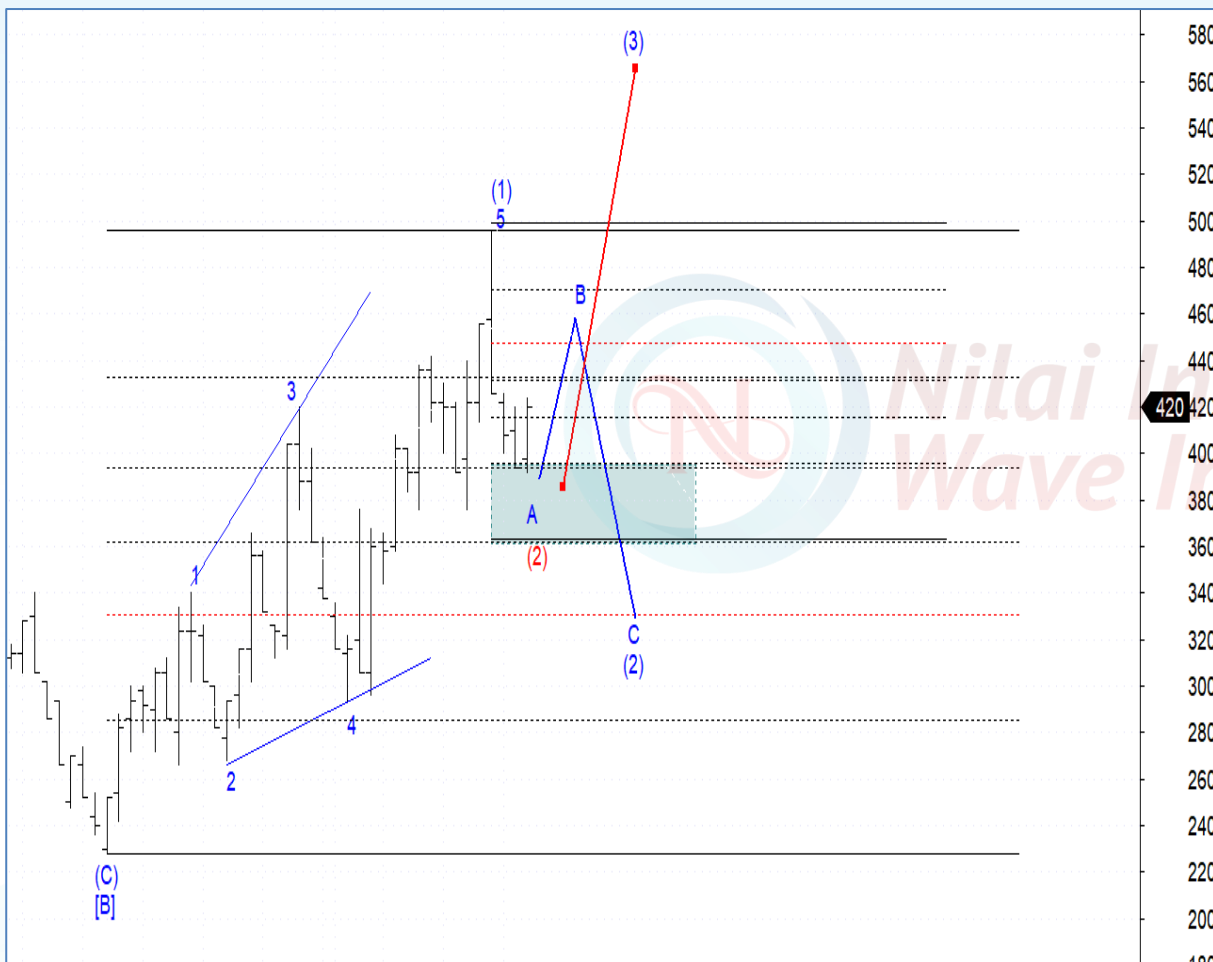


IHSG masih cenderung bergerak sideways dan melihat pergerakannya, posisi IHSG saat ini berpotensi sedang berada di awal wave (c) dari wave [b] dan IHSG masih berpotensi kembali melanjutkan penguatannya ke level 7150-7250 dalam beberapa waktu ke depan. Skenario ini berlaku selama IHSG tidak turun ke bawah 6955.

Support : 6830, 6890, 6946
Resisten : 7100, 7130, 7160

Stock Recommendation

KRYA: *Buy On Weakness - Buy area 410-420; TP 450, 480; SL 390*

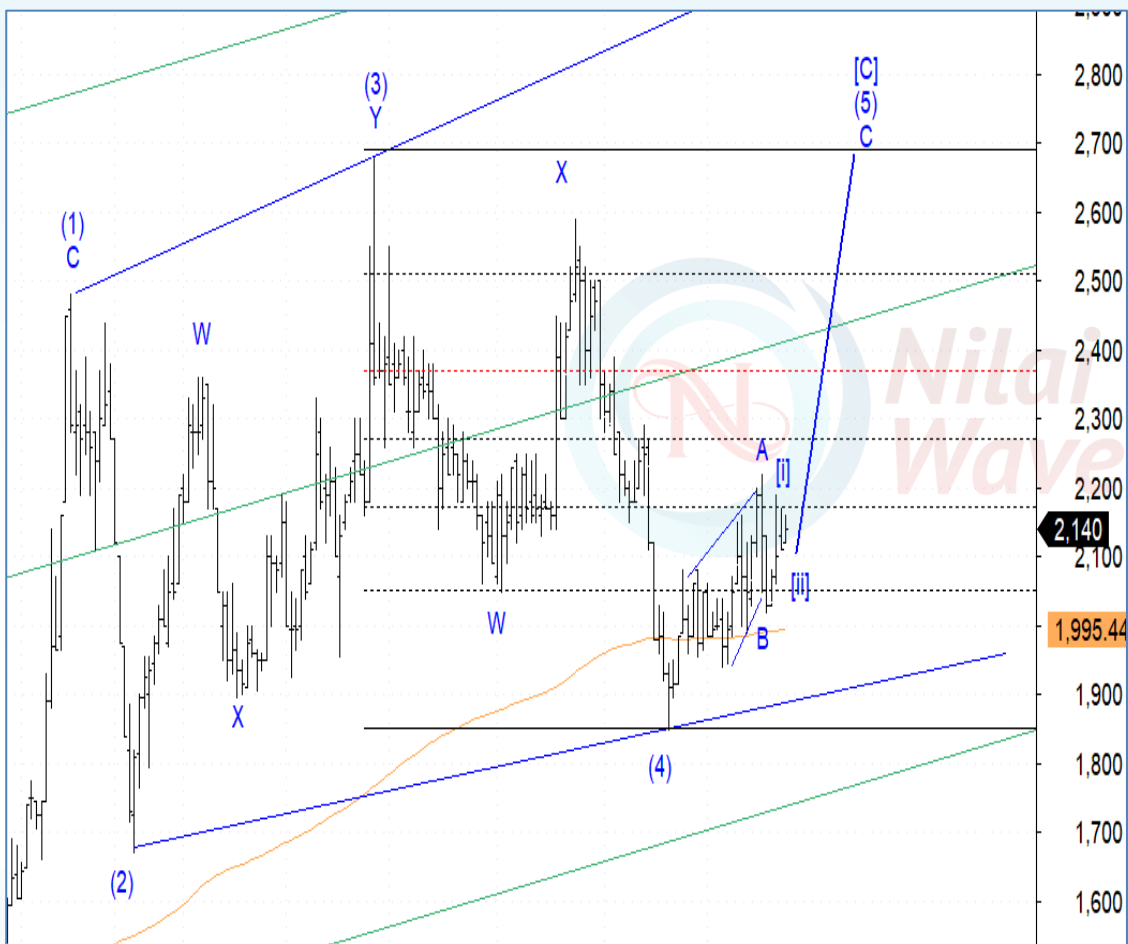


Posisi KRYA saat ini sudah berada di awal wave B dari wave (2) sehingga KRYA berpotensi kembali menguat dengan target penguatan berada di level di level 450 dan 480.

Silahkan *buy on weakness* KRYA di level 410-420 dan batasi resiko apabila KRYA ditutup di bawah level 392 (*weekly close*)

Stock Recommendation

AGII: *Buy On Weakness - Buy area 2100-2140; TP 2350, 2500; SL 2010*



Posisi AGII saat ini sudah berada di akhir wave [ii] dari wave C sehingga koreksi sudah relative terbatas dan AGII masih berpotensi kembali menguat dengan target penguatan berada di level 2350 dan 2500.

Silahkan *buy on weakness* AGII di level 2100-2140 dan batasi resiko apabila AGII ditutup di bawah level 2020 (weekly close)

Stock Recommendation

BRPT: *Buy On Weakness - Buy area 790-810; TP 870, 920; SL 780*



Posisi BRPT saat ini sudah berada di awal wave v dari wave (i) sehingga BRPT berpotensi menguat dalam jangka pendek dengan target penguatan berada di level 870 dan 920

Silahkan *buy on weakness* BRPT di level 790-810 dan batasi resiko apabila BRPT ditutup di bawah level 785 (weekly close)

Stock Recommendation

INCO: *Buy On Weakness - Buy area 7000-7200; TP 7600, 8000; SL 6875*



Posisi INCO saat ini sudah berada di awal wave (v) dari wave [iii] sehingga INCO berpotensi untuk menguat dalam jangka pendek dengan target penguatan berada di level 7600 dan 8000
 Silahkan *buy on weakness* INCO di level 7000-7200 dan batasi resiko apabila INCO ditutup di bawah level 6900 (weekly close)

Stock Recommendation

ERAA: *Buy On Weakness – Buy area 386-396; TP 420, 450; SL 378*



Posisi ERAA saat ini sudah berada di akhir wave [v] dari wave 3 sehingga koreksi sudah relative terbatas dan ERAA berpotensi kembali menguat dalam jangka pendek dengan target penguatan berada di level 420 dan 450
Silahkan *buy on weakness* ERAA di level 386-396 dan batasi resiko apabila ERAA ditutup di bawah level 380 (weekly close)

PT Nilai Inti Sekuritas
OCBC NISP Tower Lt. 21 (Head Office)
 Jl. Prof. Dr. Satrio Kav. 25
 Jakarta 12940 Indonesia
 Phone. (021) 2935 2788 (hunting)
 Fax. (021) 5794 4095
 Email: info@nilaiintisekuritas.com
 Website: www.nilaiintisekuritas.com

Branches	Address	Phone:	Fax:
Pluit Jakarta	Ruko Sentra Bisnis Blok C28 Jl. Pluit Sakti Raya No. 15 Jakarta Utara 14450	(021) 6667 5050 (hunting)	(021) 6667 5051

Rating Definitions

- Buy on Weakness (BoW) : We expect this stock could be bought below the last price.
- Trading Buy : We expect this stock could be bought at the last price.
- Sell on Strength (SoS) : We expect this stock could be sold above the last price.
- Trading Sell : We expect this stock could be sold at the last price.

DISCLAIMER

This report was produced by PT Nilai Inti Sekuritas, a member of the Indonesia Stock Exchange (IDX). The Information contained in this report has been obtained from public sources believed to be reliable and the options, analysis, forecasts, projections and expectations contained in this report are based on such information and are expressions of belief only. No representation or warranty, express or implied, is made that such information or opinion is accurate, complete or verified and it should not be relied upon as such. This report is provided solely for the information of clients of PT Nilai Inti Sekuritas who has to make their own investment decisions without reliance on this report. Neither PT Nilai Inti Sekuritas nor any officer or employee of PT Nilai Inti Sekuritas accept any liability whatsoever for any direct or consequential loss arising from any use of this report or its contents. PT Nilai Inti Sekuritas may be involved in transactions contrary to any opinions herein to make markets, or have positions in the securities recommended herein. PT Nilai Inti Sekuritas may seek or will seek investment banking or other business relationships with the companies within this report. This report is a copyright of PT Nilai Inti Sekuritas. For further information please contact our number 62-21-29352788 or fax 62-21-57944095.